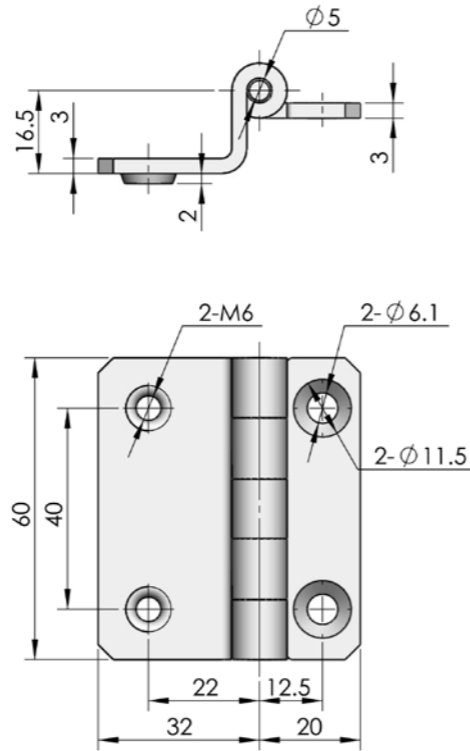


CL178



Main material and finish: White zinc-plated steel hinge leaf and shaft

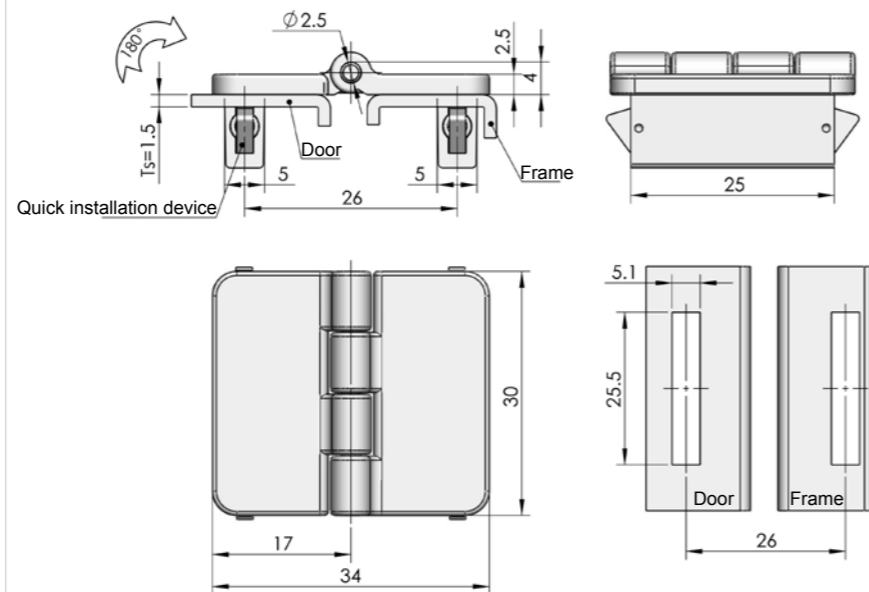


ERP CL178F3D001

CL226-9K

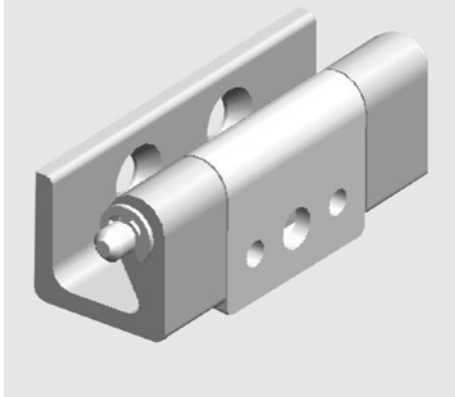


Main material and finish: Black powder coated ZDC
Application: Quick assembling, opening angle 180°



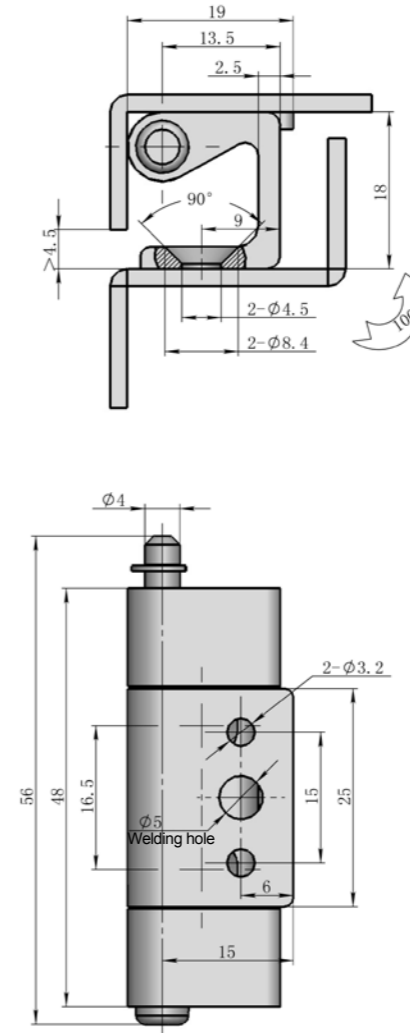
ERP CL226Z1A037

CL237-2



Material and finish: High salt mist beige grey frame hinge, electrolyze door part and SUS 316 shaft

Remarks: Frame hinge use two M4 sunk screws to fix (exclude), riveting and welding door hinge and frame



ERP CL237S2G001