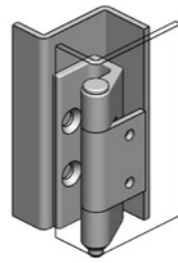
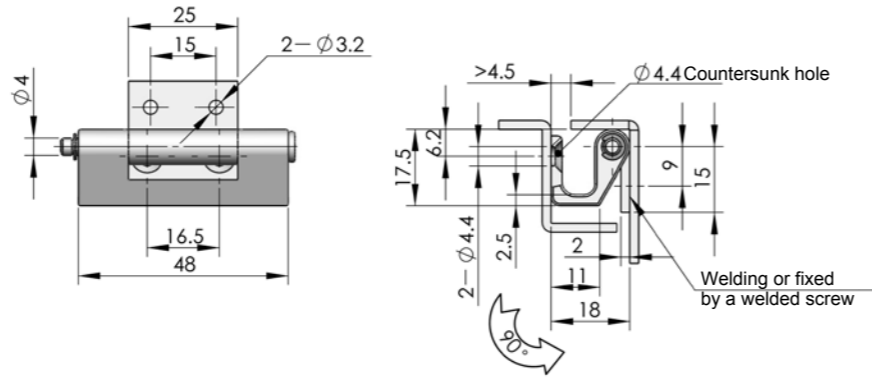


CL237



Main material and finish: Sand-spraying and bright chrome-plated ZDC female hinge, white zinc-plated steel male hinge, nickel plated steel pin
Application: Opening angle 90°

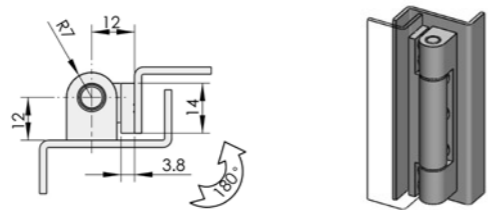
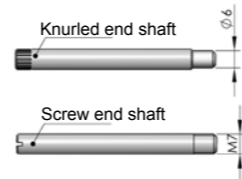
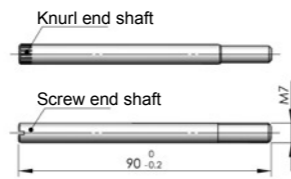
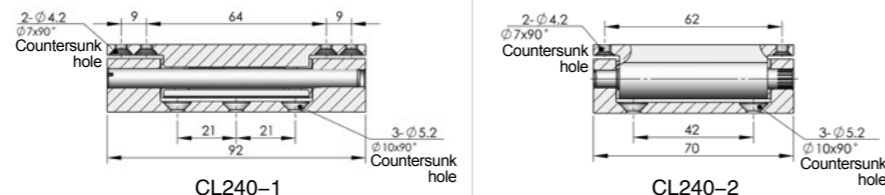


	Sand-spraying and bright chrome-plated	Sand-spraying and nickel-plated
ERP	CL237Z3H001	CL237Z3I001

CL240-1
CL240-2



Main material and finish: Oxidation aluminum alloy hinge, nickel-plated steel pin
Application: Opening angle 180°

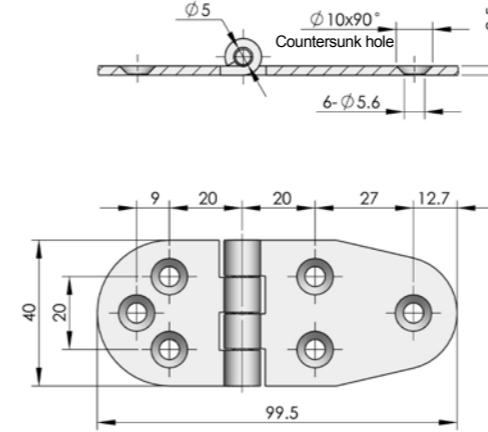


Item	ERP	Specification
CL240-1	CL240A9A001	With knurl end shaft
CL240-1D	CL240A9A002	With screw end shaft
CL240-2	CL240A9A003	With knurl end shaft
CL240-2D	CL240A9A004	With screw end shaft

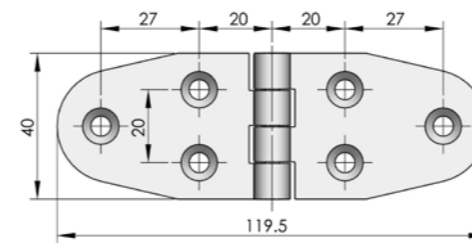
CL238



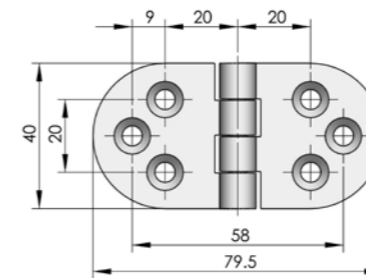
Main material and finish: Electrolysis stainless steel hinge
Application: Opening angle 180°



ERP	CL238S9C001
-----	-------------



ERP	CL238S9C002
-----	-------------



ERP	CL238S9C003
-----	-------------